

Swine Influenza Surveillance in Thailand

Sujira Parchariyanon

**National Institute of Animal Health
Thailand**

SIV surveillance activities in Thailand

- **National surveillance in Thailand**

- To obtain informations on the prevalence of SIVs in Thailand using serological analysis
- 2010-2011

- **Collaboration study**

- **National Institute of Animal Health, Japan**

- To obtain informations on the prevalence of SIVs in Thailand and the circulation mechanism of SIV in pig farms using virological analysis
- 2011-2015

- **AFRIMS**

- Human-animal interface SIVs infection
- 2012-2014

- **FAO**

- **Project I:** SIVs surveillance in Mukdaharn province
- 2010-2011
- **Project II:** SIVs surveillance EPT Plus Project
- 2012-2013

- **MOPH**

- SIVs surveillance in Nan province
- 2010-2011



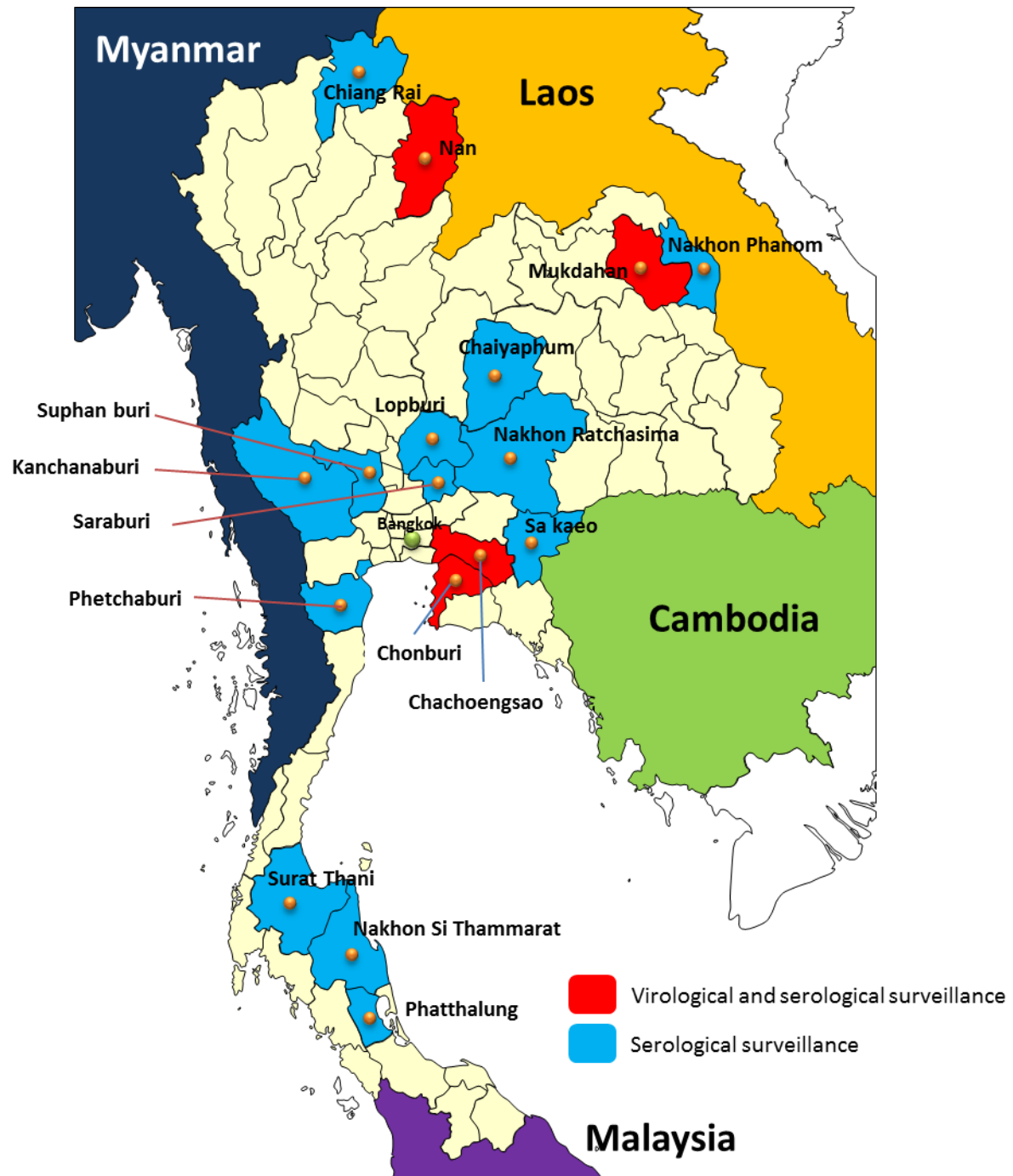
Accomplishments

- **National surveillance in Thailand**
 - 900 serum samples were collected between 2010 and 2011 in 15 provinces
- **Collaboration study**
 - NIAH Japan - ZDCC
 - AFRIMS
 - On process
 - FAO
 - Project I: 118 swabs and serum samples
 - Project II: On process
 - MOPH
 - 880 swabs and serum samples



SIV surveillance activities in Thailand in 2011

- Serological surveillance
 - 17 provinces
- Virological and serological surveillance
 - 4 provinces
- Serum collection
 - Number of test samples: 1898



Sero-surveillance in Thailand

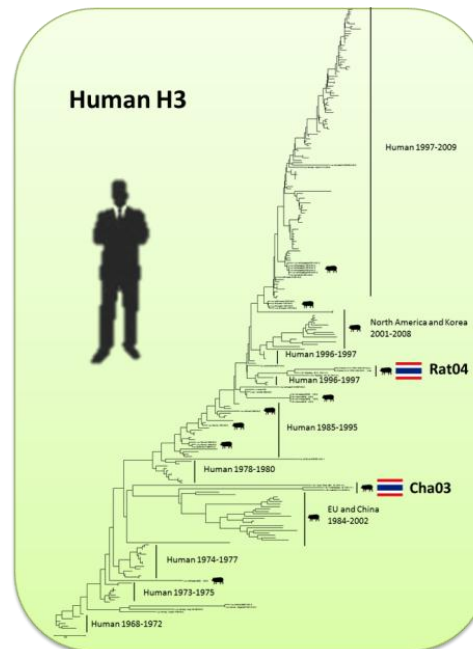
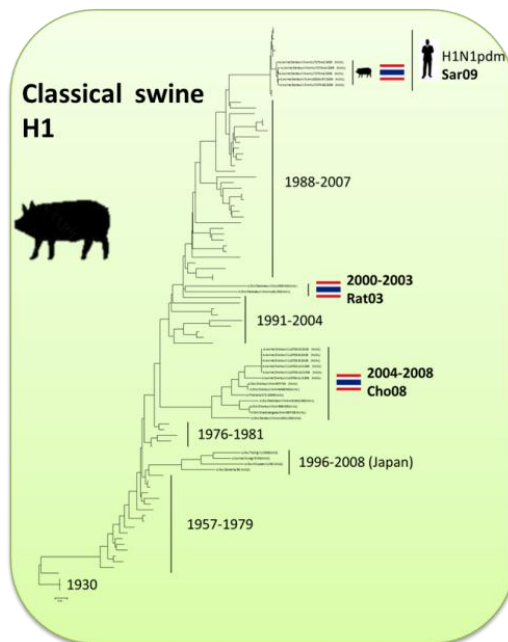
- **HI test**

- **H1N1**

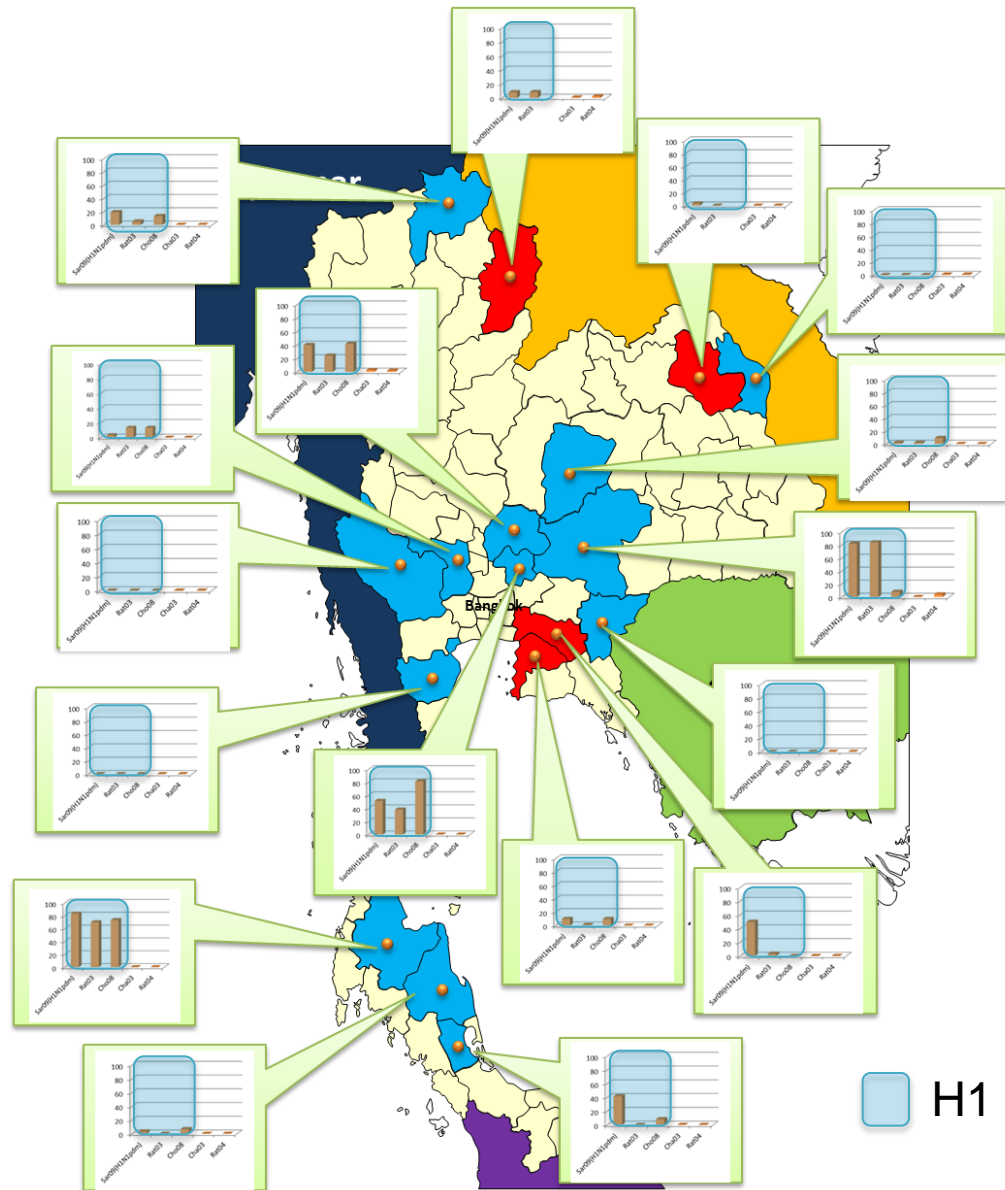
- A/swine/Ratchaburi/NIAH550/2003 (Rat03, Thai isolate)
 - A/swine/Chonburi/NIAH110702-7/2008 (Cho08, Thai isolate)
 - A/swine/Saraburi/NIAH11720-26/2009 (Sar09, Thai isolate)
 - Pandemic(H1N1)2009 virus

- **H3N2**

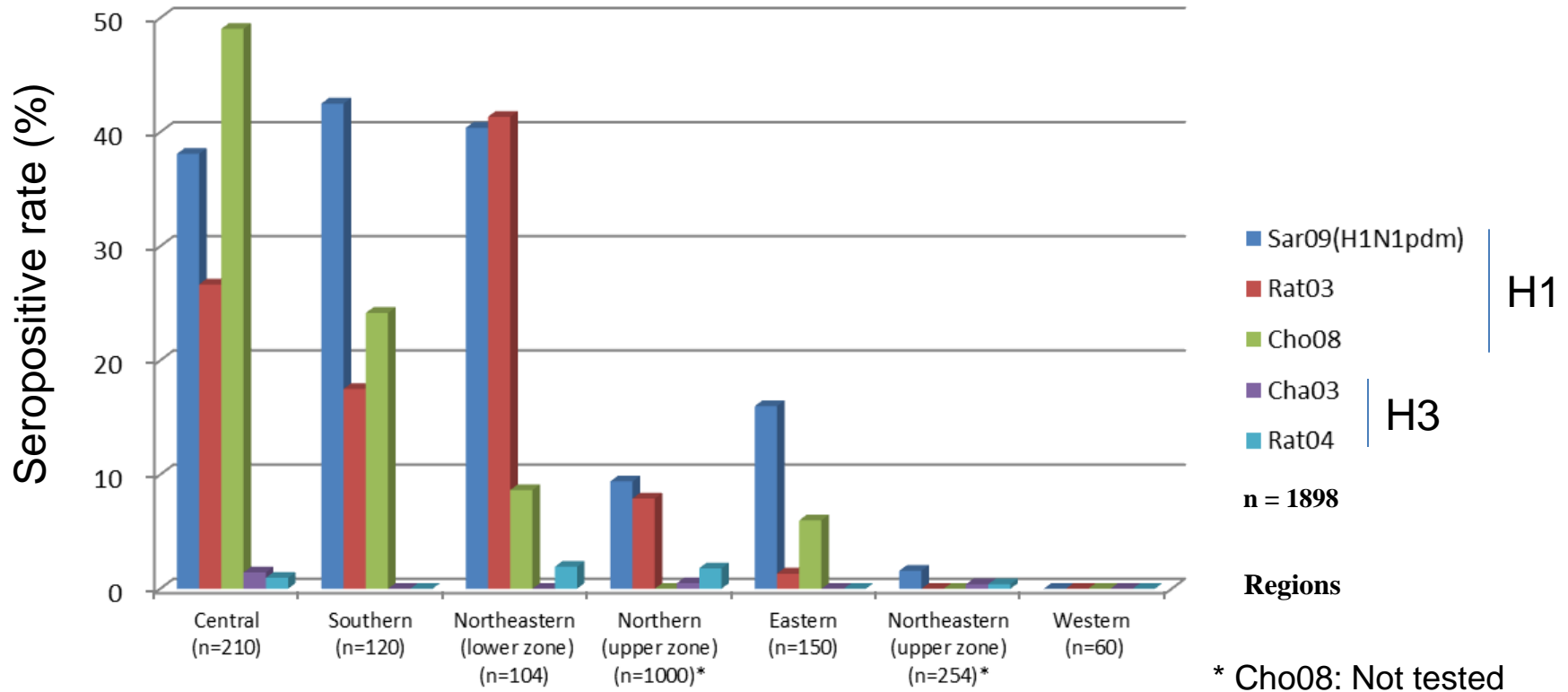
- A/swine/Chachoengsao/2003 (Cha03, Thai isolate)
 - A/swine/Ratchaburi/NIAH59/2004 (Rat04, Thai isolate)



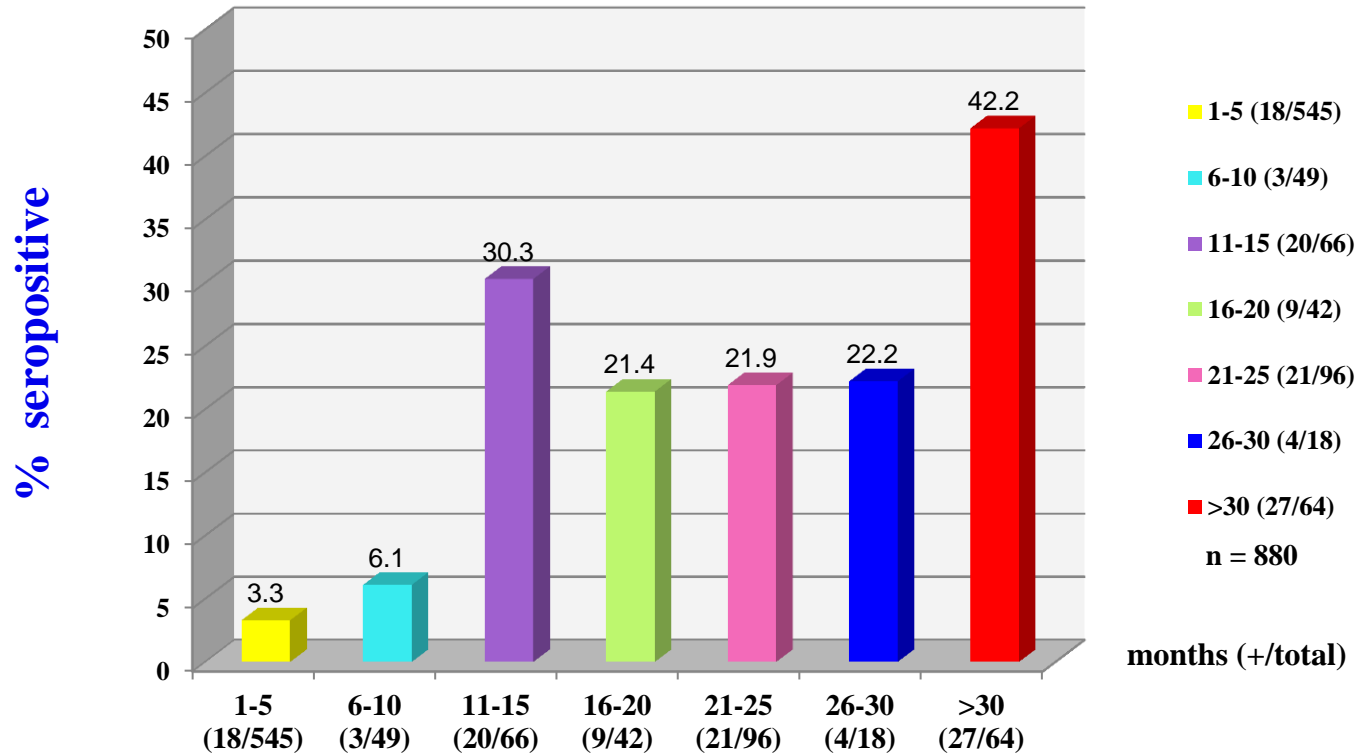
Seropositive rate in each province in Thailand



Seropositive rate in each region in Thailand



Percentage of SIV seropositive among ages



Acknowledgements

- National Institute of Animal Health, Japan
- FAO, OIE
- AFRIMS
- Department of Livestock Development, Thailand
- CDC & Ministry of Public Health, Thailand
- Virology section, National Institute of Animal Health, Thailand

Thank you

