



TECHNICAL MEETING

18 April 2018

Brighton, UK

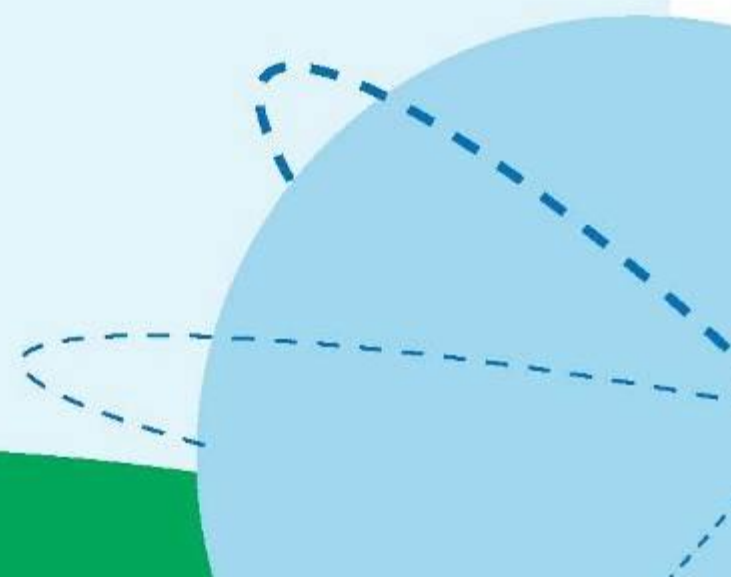
An Overview of OFFLU's Strategic Direction

Peter Daniels

Chair, Steering Committee

David Swayne

Chair, Executive Committee



What is OFFLU?

- OFFLU is a global, open network of expertise on animal influenza
- established jointly in 2005 by the OIE and the FAO (the parent organizations)
- to support and coordinate global efforts to **prevent, detect and control important influenzas in animals**
- (Encompasses the OIE and FAO Reference and Collaborating Centres, other diagnostic and research facilities, and world leading experts from a range of disciplines including diagnostics, classic and molecular epidemiology, virology, animal production, vaccinology and veterinary medicine)

OFFLU's Vision

The animal health community will provide early recognition and characterisation of emerging influenza viral strains in animal populations, and effective management of known infections,

- **thereby better managing the risk to human health**
- **and supporting global food security,**
- **animal health and welfare,**
- **and other community benefits derived from domestic animals and wildlife**

OFFLU's four over-arching objectives:

- 1) To **share** technical advice, training and expertise to international organisations and Member Countries
- 2) To **exchange scientific data and biological materials** (including virus strains) within the network, to analyse such data, and to share such information with the wider scientific community.
- 3) To **collaborate with the WHO** on issues relating to the animal-human interface, including pandemic preparedness for early preparation of human vaccine.
- 4) To highlight influenza surveillance and research needs, promote their development and co-ordination

How does it work? (1)

**Primarily through designated special interest groups:
Technical Activities (TA)**

Currently there are TAs for

- **Avian influenza**
- **Swine influenza**
- **Equine Influenza**
- **Influenza in Wildlife**
- **WHO VCM activities**
- **Epidemiology**
- **Socioeconomics**

How does it work? (2)

Supported by committees (all voluntary) and office bearers

Steering Committee

- Sets/approves directions

Executive Committee

- Makes it happen, (and M&E)
- Deals with issues as they come up

Parent Organization Focal Points

- Main point of contact with OIE and FAO
- Actively involved in the two committees

Secretariat

- Does the admin and coordination

OFFLU Scientist

- Focuses on specific issues as a day job

What should OFFLU be doing to be considered successful?*

- Is consulted as a leading source of knowledge on influenza infections in animals (including wildlife)
- Maintains its core functionality as a network of influenza laboratories for all affected animal species
- Partners in developing standardized processes (databases) for capturing, storing, quality assuring and analysing molecular and epidemiological data
- Regularly advises on the scientifically based selection of antigens for both routine and emergency vaccines against influenza viruses of animal origin (for use in veterinary and public health)



* As discussed in our OFFLU meeting in Athens, Georgia, 3 years ago

What should OFFLU be doing to be considered successful? (cont)

- Effectively advocates more comprehensive, targeted, efficient, and effective (smarter) surveillance for influenza infections in animal species (working with OIE, FAO, veterinary authorities and the farming, wildlife companion animal and equine sports sectors)
- Promotes and partners in multidisciplinary collaborations of effective disease control based on an understanding of socio-economic factors and value chains (with an initial focus on H5N1 HPAI and zoonotic AI)
- Promotes the science to identify which animal influenza viruses pose a risk to animal health and public health (and actively maintained the register of animal influenza research priorities)

Background considerations behind the breakout sessions for the separate Technical Activities (TAs) later today:

- **What opportunities does the OFFLU network offer to investigators, that would not be available to institutions working alone, or regionally?**
- **How is any activity going to be conceived, planned, coordinated, implemented and reported?** (You are the experts!)
- **What are the resources already available?** (Can every OFFLU member just contribute as part of their day job? Do you want to? Are you already in a TA?)
- **What advocacy or changes of approach are needed**

In the TA breakout sessions....

- 1) Please brain storm/consider/discuss/prioritize activities that the network of the TA could usefully undertake
- 2) Stating the need and the potential benefit to be gained from the activity
- 3) Assess members or institutions who could lead and who could, or should, participate
- 4) Consider allocating tasks and agreeing timelines
- 5) Ideally each TA will develop a workplan or plans that indicate(s)
 - Action items (what/who/when)
 - 1 year objectives
 - 3 year objectives

Acknowledgements

OFFLU Steering Committee

- Peter Daniels
- Gerrit Viljon
- Ian Brown
- William Karesh

OFFLU Executive Committee

- David Swayne
- Nicola Lewis
- Giovanni Cattoli
- Jiming Chen
- Tianna Brand (OIE)
- Lidewij Wiersma (FAO)

OFFLU Secretariat

- Gounalan Pavade

Thanks everyone!

And please spend a bit of time checking out
<http://www.offlu.net>

