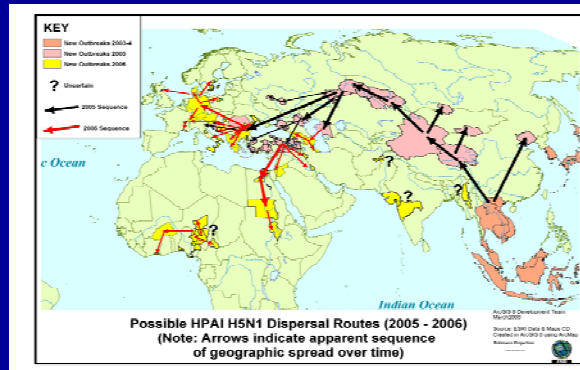
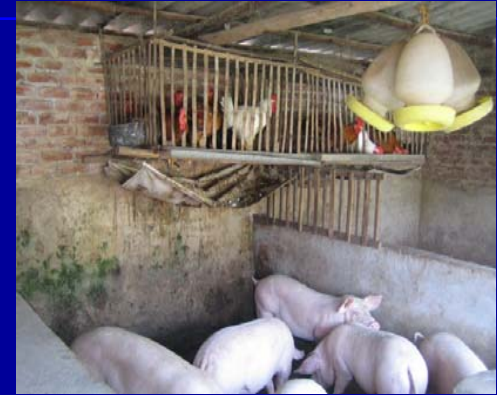


"One Flu"

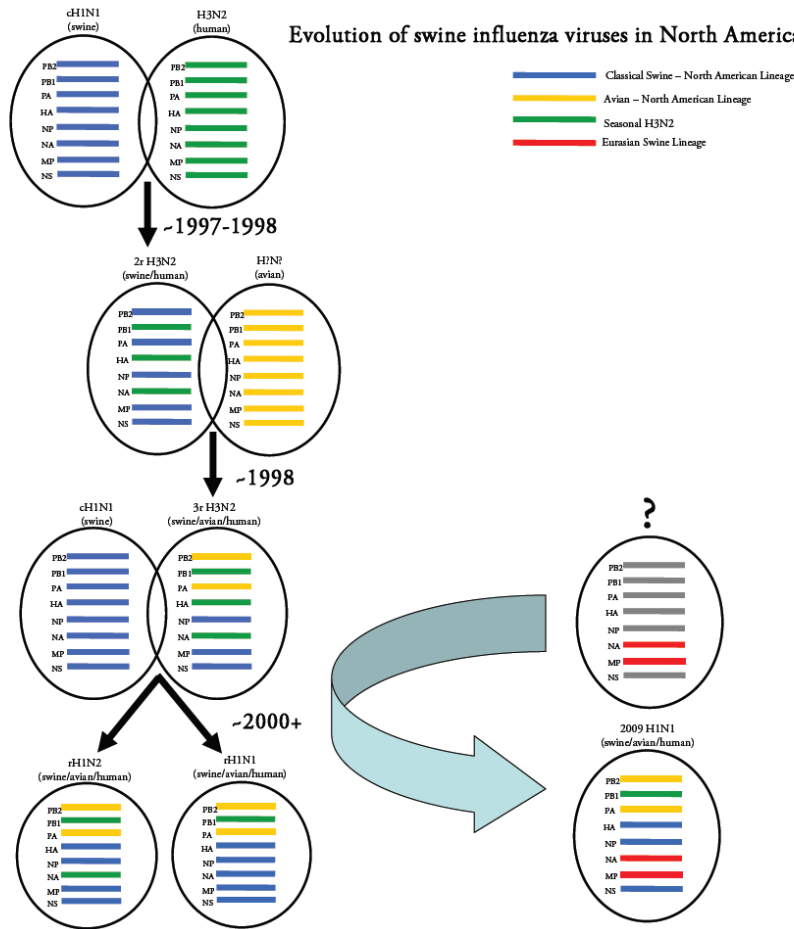
Development of a permanent influenza gene pool observatory to monitor and understand how influenzavirus genes move across species and continents for improved human and animal health





Influenzaviruses cannot be put in boxes

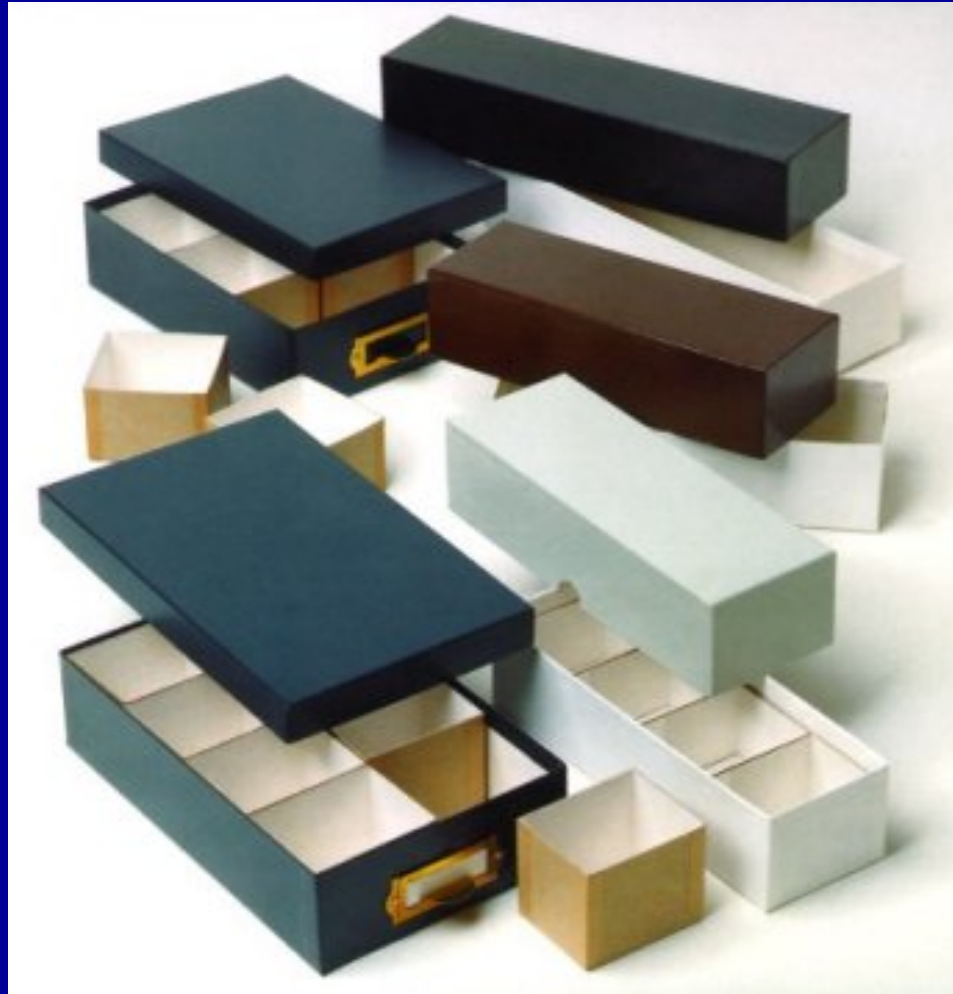
Evolution of swine influenza viruses in North America

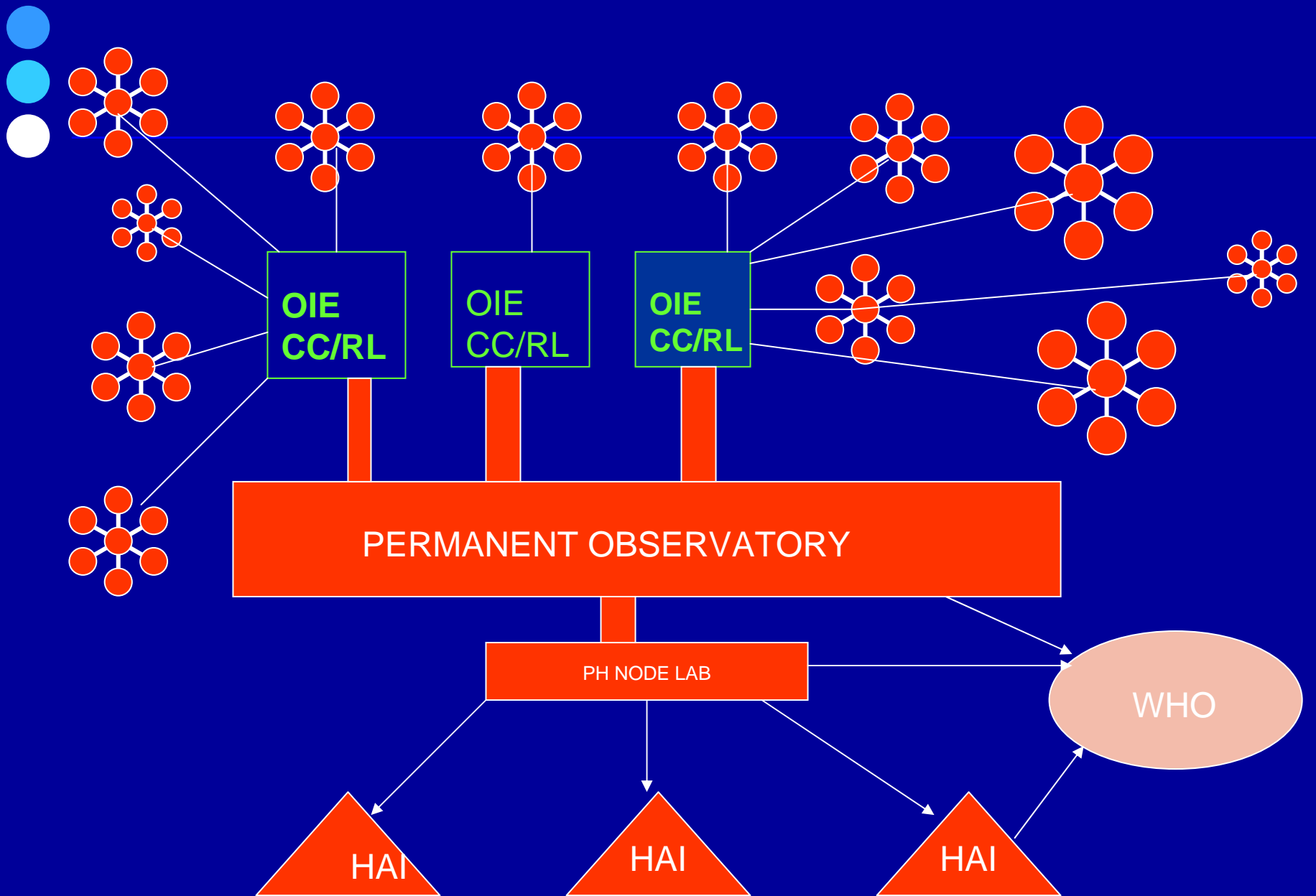


naoH1N1

- genes from viruses established in 3 species
- Originating from two hemispheres

Is this the right way to approach influenzavirus infections?





Influenza gene pool analysis



List of Participants

OIE CC's

Fao Regional Networks

NVRI Vom Nigeria
Dakar Senegal
Gaborone, Botswana
OVI, RSA
Kabete, Kenya
Ethiopia

OIE Reference labs

VLA, UK
FLI, DE
Harbin, China
Hokkaido, Japan
Bhopal, India
USDA, Ames, Iowa USA
CFIA Canada

PH labs CDC Influenza Division
USDA APHIS/SERPL

OIE Twinned labs

ARRIAH, Russia
Censa, Cuba
NVRL Egypt
Islamabad Pakistan
NVRI Qatar

Other

Uni Florida (Canine –Feline)
Uni Kentucky (Equine)
Uni Minnesota (swine)
Hong Kong University
EU EPIZONE Network
Uni Maryland *



Panorama Phylogenetic Diversity and Distribution of Type A Influenza Virus

Liu S, Ji K, Chen J, Tai D, Jiang W, et al. 2009 Panorama Phylogenetic Diversity and Distribution of Type A Influenza Virus. PLoS ONE 4(3): e5022. doi: 10.1371/journal.pone.0005022

