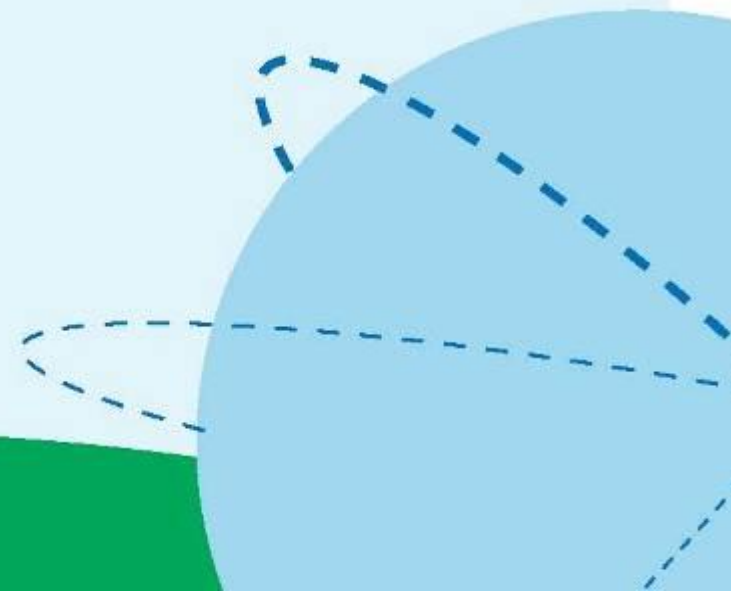




# Capacity building and the way forward

*Giovanni Cattoli, IZSVe  
With the contribution of  
Anja Globig, FLI  
Gwenaelle Dauphin, Mia Kim, FAO*

*OFFLU annual technical meeting,  
Royal Holloway, London  
4-5 April 2012*



# TA capacity building

## Main Objectives

- Develop and facilitate access to quality training material for institutions/trainers
- Assist and provide technical support to institutions involved in the organization of training for the selection and evaluation of trainees
- Facilitate access to information, data and material to candidate trainees

# TA Capacity building specific objectives *(Sept 2011)*

- develop/select e-learning systems and define the possible applications (eg. pre-requisite for an international training)
- develop/compile common OFFLU training material (including videos)
- develop a database of trainees (to be managed then by the OFFLU secretariat)
- develop recommendations on AI training
- develop a train the trainers program
- identify training needs based on overall PT results
- envisage perspectives of common human health/animal health training and lab/epi training

# TA Capacity building – Outputs

*(March 2012)*

## **Develop Training Material**

DVD on lab techniques for AI in English and French developed, revised and made available (IZS-Ve-FAO)

e-learning course finalized and prototype tested (EU project Flu-Train),

**Collection, identification and evaluation** of the training materials available and potentially useful (FLI, FAO):

books

e-learning course

DVDs

other web-based trainings freely accessible

# TA Capacity building – Outputs

*(March 2012)*

- **Review and selection** of the type of material then endorsed by OFFLU steering/scientific committee and presented in a specific training-centre module at the OFFLU-website (FLI, FAO)
- Excel file developed for information of a **list of trainees** which can be centrally handled at OFFLU secretary (compiled prototypes available from IZSve & FLI)
- Specific link created for training on the **OFFLU web site**
- Interactions with the WHO-GIP Digital Library for Influenza Training website for training material on influenza at the **animal-human interface**

# TA Capacity building

## Challenges and the way forward

- Involvement and active participation/contribution of laboratories/centres in providing materials and information
- Maintenance and updating of the material/information posted on the web site or participant list

# TA Capacity building

## Future activities

- Exploring additional/new fields for training opportunities requested by scientists/lab technicians and related development of training material (e.g. sequencing protocols, phylogeny, bioinformatics)
- Common trainings/material for lab & epi
- Develop recommendations on AI training (e.g. selection and certification of the participants)
- Develop a “train the trainers” program