



Current A/H1N1 SOIV-related activities at Riems

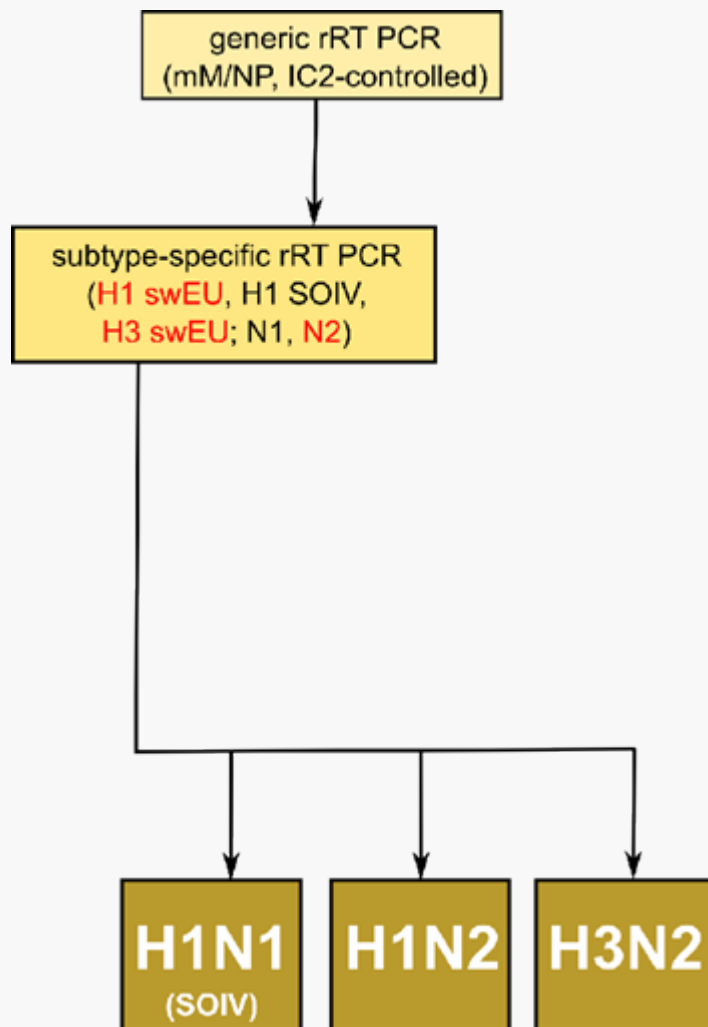
FRIEDRICH-LOEFFLER-INSTITUT

FLI

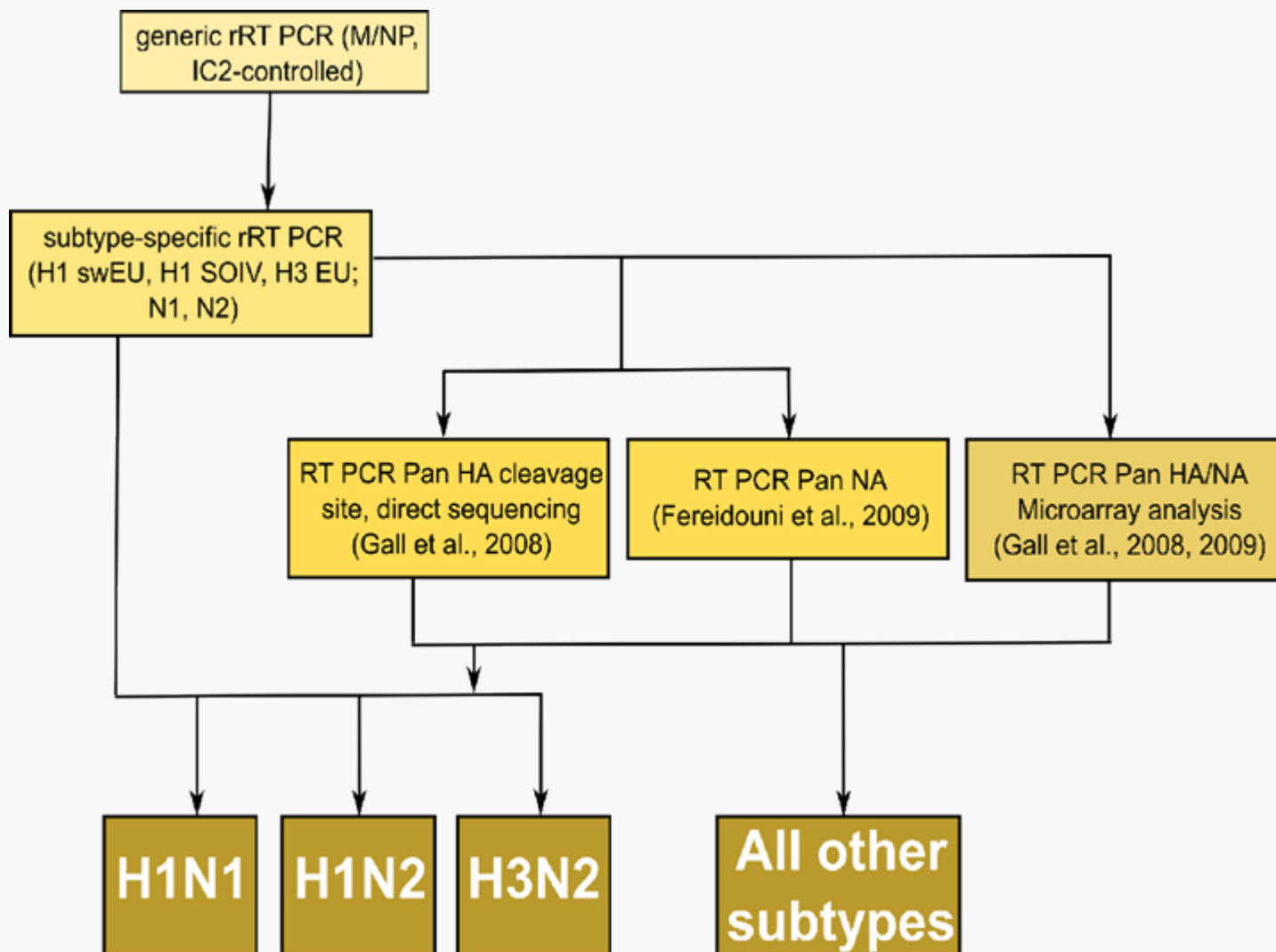
Bundesforschungsinstitut für Tiergesundheit
Federal Research Institute for Animal Health

**O.I.E. And National Reference Laboratory
for Avian Influenza**

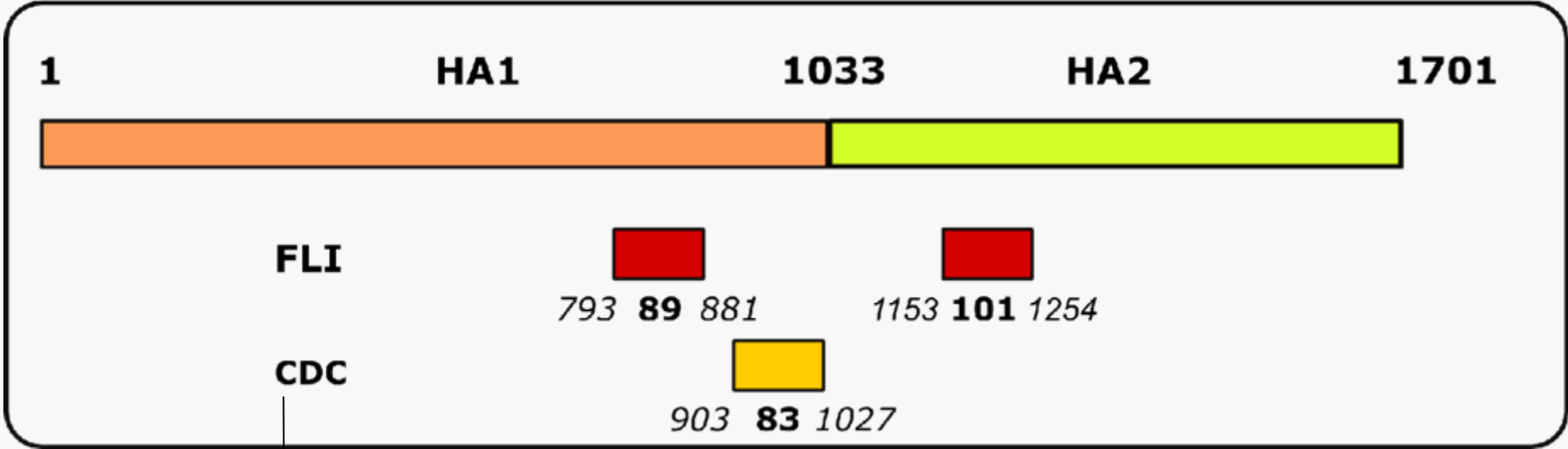
Cascade style diagnosis of porcine influenza by rRT PCR



Cascade style diagnosis of porcine influenza by rRT PCR



HA A/Regensburg/D6/2009 (H1N1 SOIV)



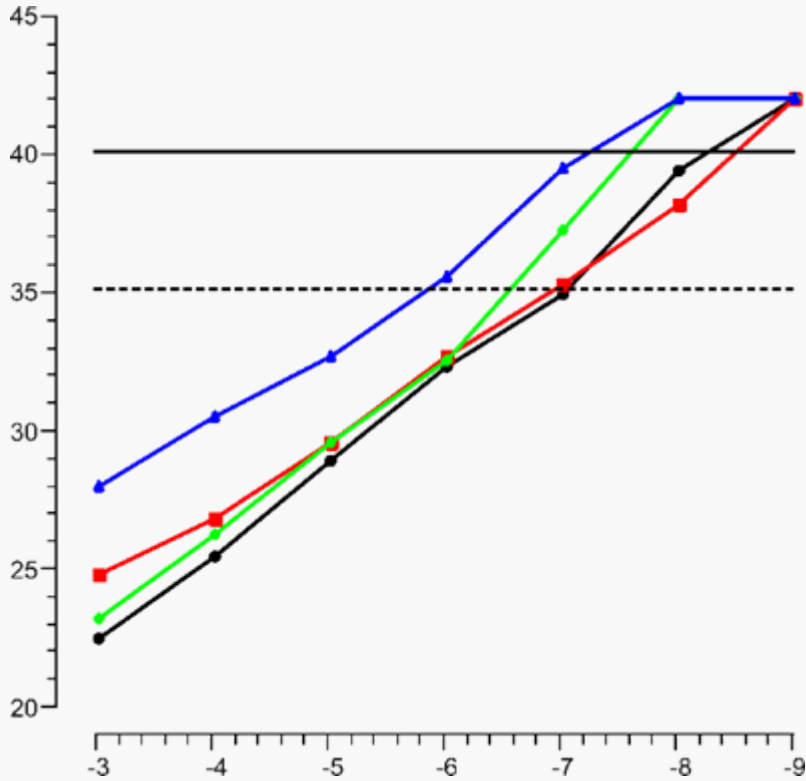
Modified probe (!)

FLI assays also submitted to OFFLU homepage

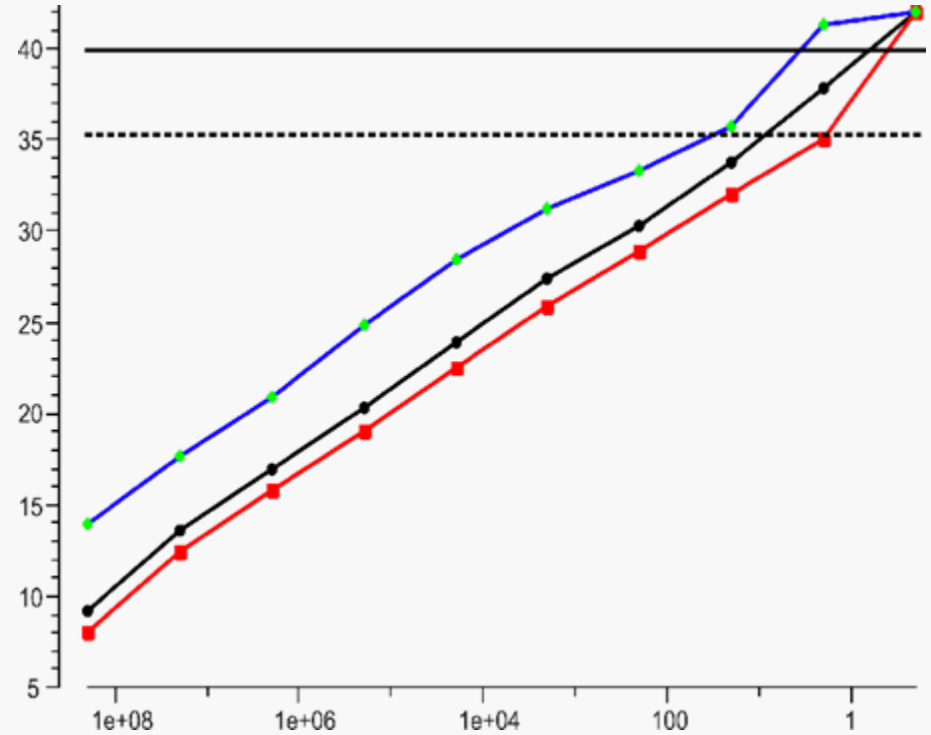


HA H1N1 SOIV rRT-PCR: *Analytical performance characteristics*

Viral RNA log dilution



Run-off transcript RNA copies



- mCDC
- FLI-SOIV-1
- mM
- FLI-SOIV-2



HA H1N1 SOIV rRT-PCRs: *Analytical* performance characteristics

No reactivity of FLI-SOIV-1 and -2 or mCDC with

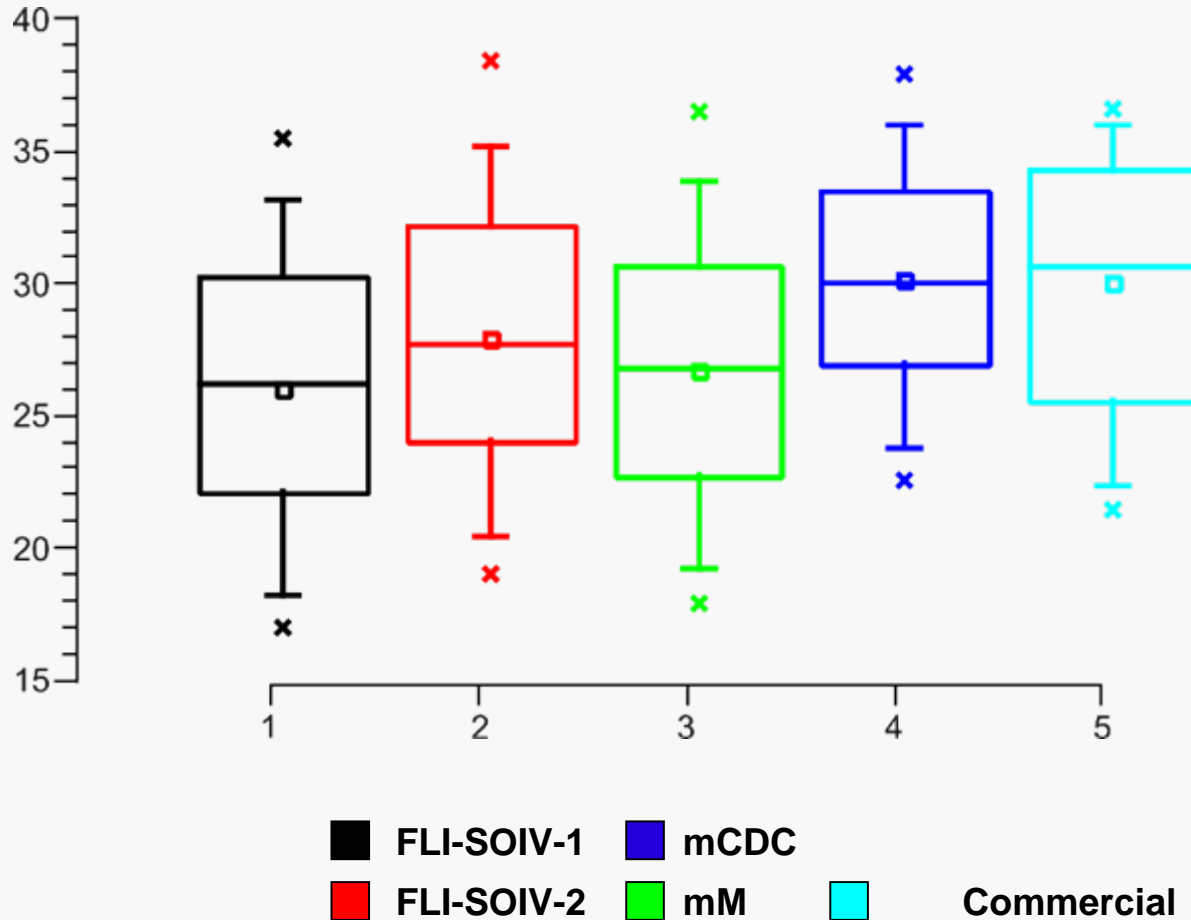
- porcine EU H1N1,2 (n=10)**
- porcine EU H3N2 (n=6)**
- avian H1-H16 (n=17, 2 H1 strains)**
- human seasonal H1N1 (n=13)**

at Ct values of 20 (+/- 2) with mM rRT-PCR.



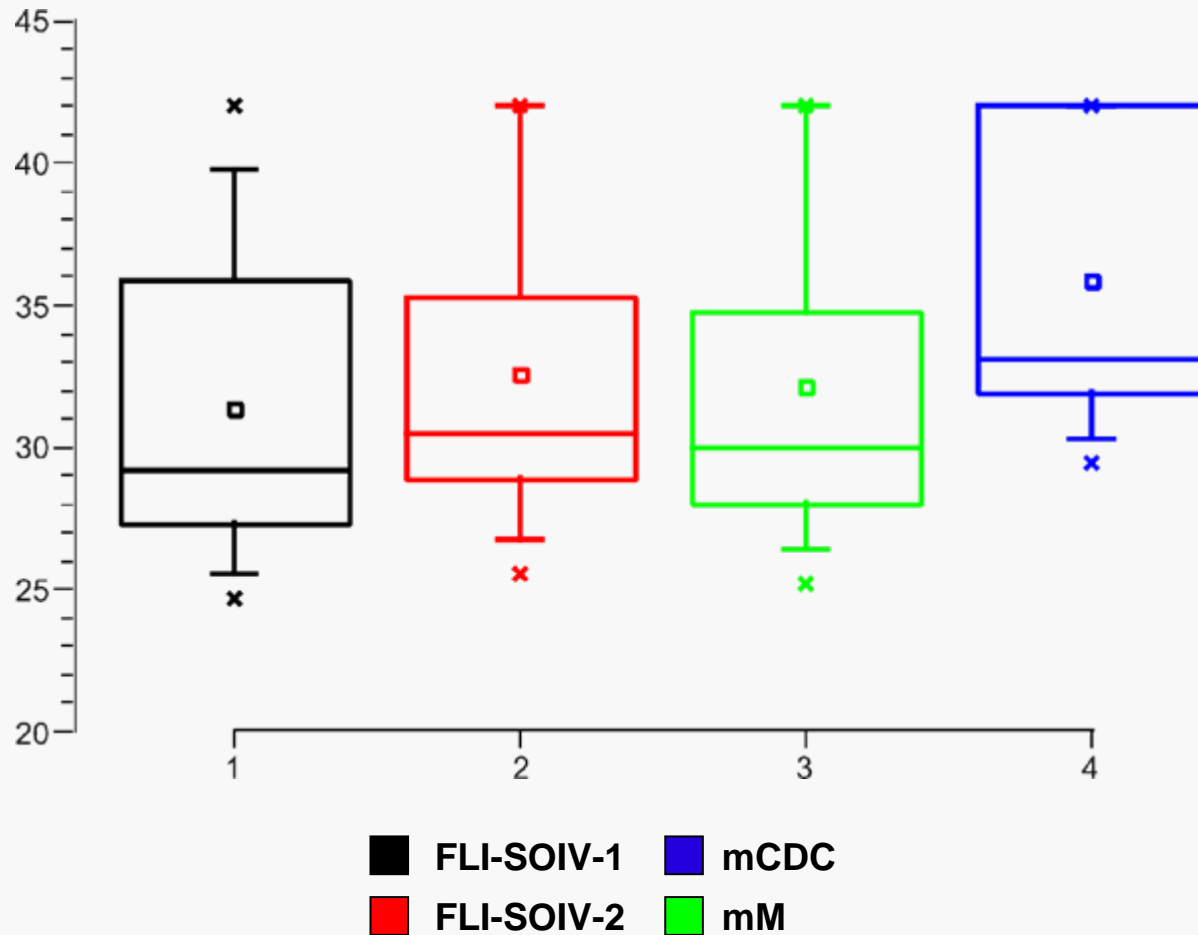
HA H1N1 SOIV rRT-PCR: *Diagnostic performance characteristics*

Human positive samples (n=14)



HA H1N1 SOIV rRT-PCR: *Diagnostic performance characteristics*

Porcine samples (n=18)



Further SOIV-related activities at FLI

Pathogenicity/vaccine evaluation group (Thomas Vahlenkamp, Martin Beer): *Lange et al., J. Gen Virol., 2009*

Reverse genetics group (Juergen Stech)

Epidemiology/data base group (Christoph Staubach)

Genome sequencing group (Elke Starick, Dirk Hoeper)

Assay development (Bernd Hoffmann, Timm Harder): *Hoffmann et al., BMTW, 2009 (in press)*



Thanks,
and best regards from the island!

**Bard Utman, Tim Hock, Elv Lage, Doris Klotz, Ina Rinan,
Christa Gund, Rine Olme, Burhid Schweig,
Tomas V. Herlaper, Mirja B.**

